

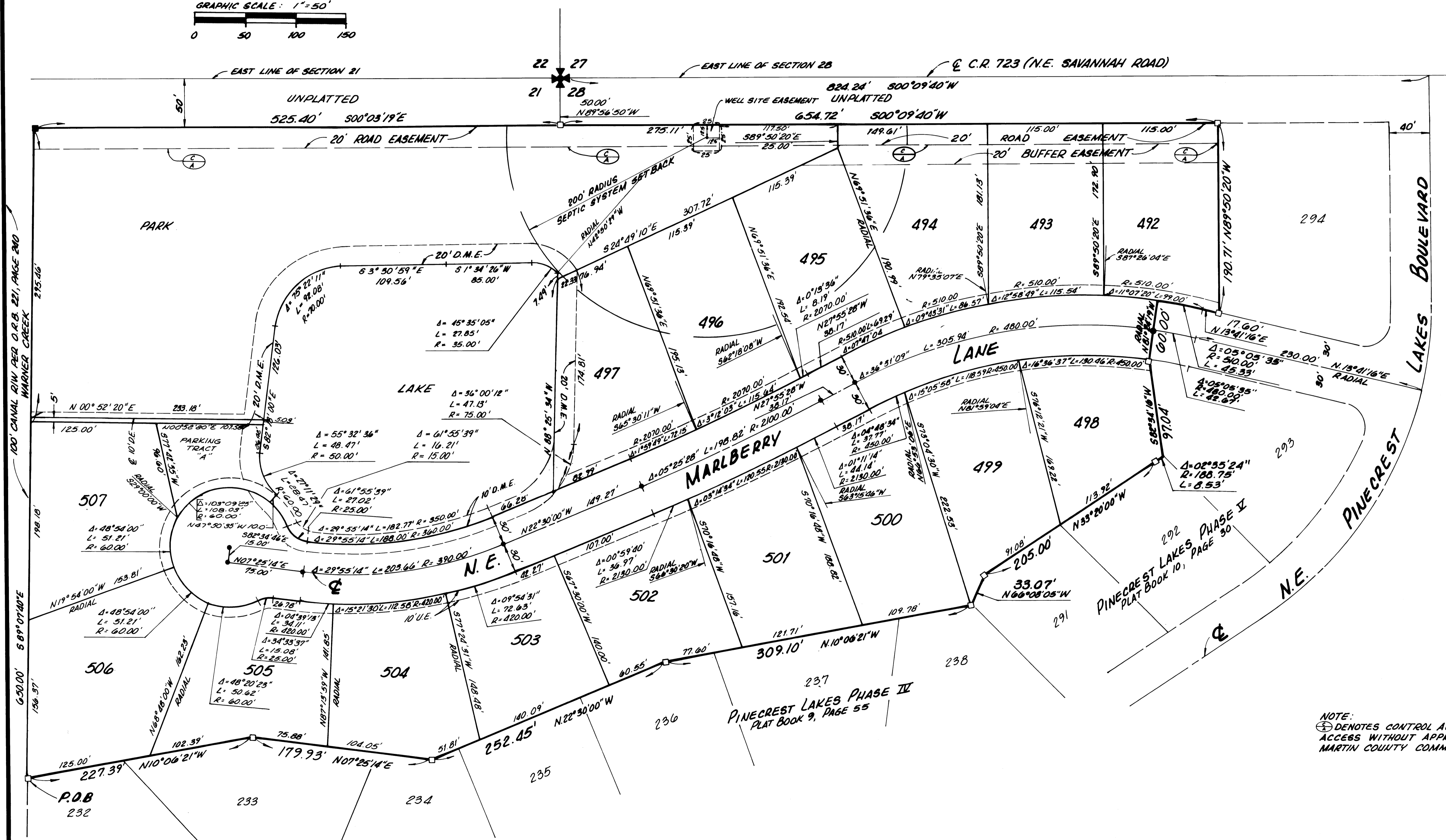
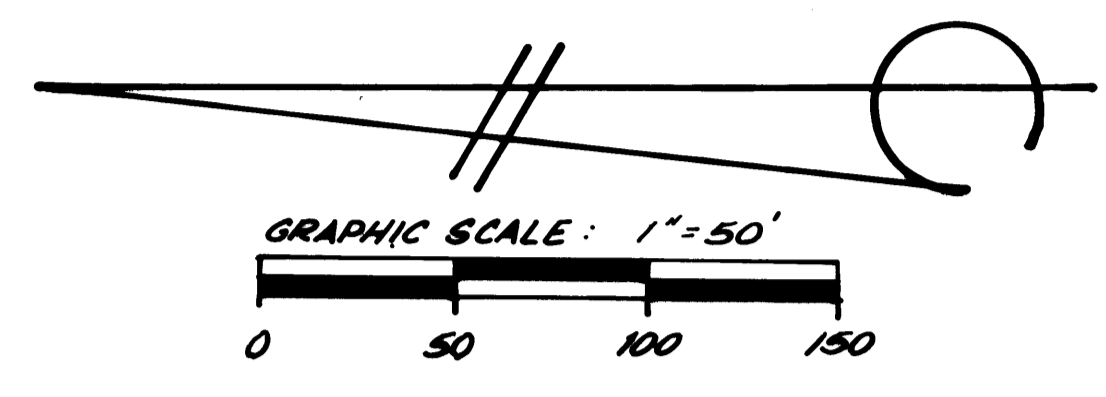
PLAT OF PINECREST LAKES PHASE IX

I, MARSHA G. STILLER, COUNTY CLERK OF MARTIN COUNTY, FLORIDA, HEREBY CERTIFY THAT THIS PLAT HAS BEEN FILED FOR RECORD IN PLAT BOOK 11, PAGE 51, PUBLIC RECORDS OF MARTIN COUNTY, FLORIDA, THIS _____ DAY OF _____ A. D. 19____.

MARSHA G. STILLER, CLERK
MARTIN COUNTY, FLORIDA

BY _____

FILE NO. _____



NOTE:
⊕ DENOTES CONTROL ACCESS LINE. NO VEHICULAR ACCESS WITHOUT APPROVAL OF THE BOARD OF MARTIN COUNTY COMMISSIONERS.

		PINECREST LAKES PHASE IX RECORD PLAT	
Dr. J.D.	F.B.	Scale 1" = 50'	SHEET 2 OF 2
Ch. J.D.	P.G.	Date 15, DEC, 1986	
Ad. J.D.		Job No. 2510-S	